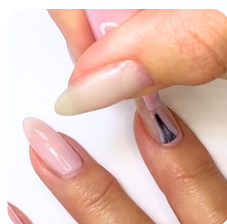


# ASP Floral Gel Polish

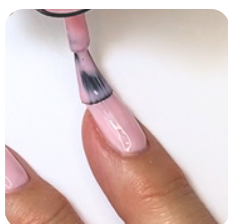
Create this beautiful design with ASP

## PRODUCTS NEEDED

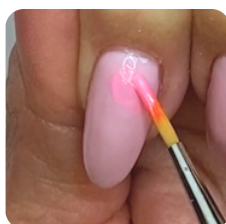
ASP Gel Art & Detail Brush, ASP Pink Whisper Gel Polish, ASP Ooh La La Gel Polish, ASP White Hot Gel Polish, ASP Grape to See You Gel Polish, ASP Black Beauty, ASP Lemon Drop Gel Polish, ASP It's Electric & Island Time Gel Polish, ASP Top Coat & ASP LUMINA Rechargeable LED/UV lamp .



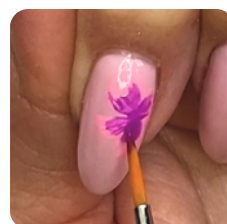
**1** Apply ASP Pink Whisper Gel Polish to prepared nails & Cure.



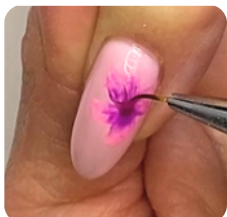
**2** Apply a 2nd coat of Pink Whisper & Cure.



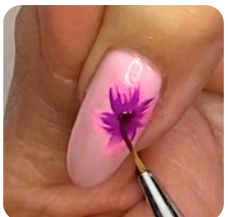
**3** Mix ASP Ooh La La & White Hot Gel Polish on a palette. Use a gel art brush to make the 1st layer of petals & Cure.



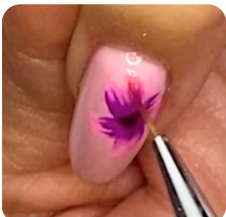
**4** Use a gel brush & ASP Grape to See You Gel Polish to create 2nd layer of petals & Cure.



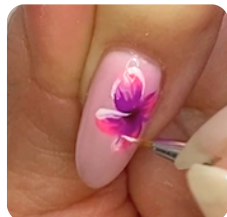
**5** Use a detail brush & ASP Brooding Burgundy to accentuate the center of the flower & Cure.



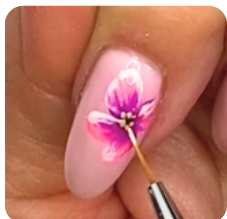
**6** Using the detail brush & ASP Black Beauty, create the pistil of the flower & Cure.



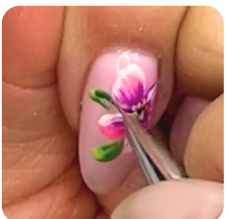
**7** Use detail brush & ASP Ooh La La to create depth to 1st layer of petals & Cure.



**8** Use detail brush & ASP White Hot gel polish to outline & define petals & Cure.



**9** Use ASP Lemon Drop & a detail brush to create the stamen & Cure.



**10** Dab your art brush in both ASP It's Electric & Island Time Gel Polish to create the leaves, accent the stamen & Cure.



**11** Apply ASP Top Coat & Cure



**12** A beautiful Finish!